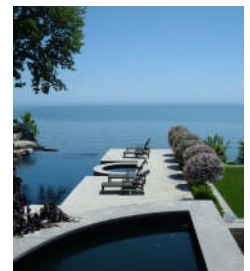
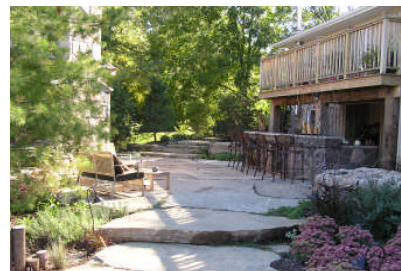


## Residential Landscape Design

**Daniel J. O'Brien & Associates Limited Landscape Architects** has been commissioned to master plan over 250 residential properties. These projects have included properties ranging from the typical small subdivision lot to large waterfront estate lots, and have incorporated many components such as swimming pools, spas, overhead timber pergolas, auxiliary buildings, timber decks, cubical limestone rockery, hard surface treatments (interlocking brick, flagstone, patterned concrete),



landscape berming, and fencing/lattice screens. DJO&A have worked with many clients, and place great importance on each individual project, taking great care in providing our clients with a completed landscape design that incorporates the client's wishes, and budge into a visually stunning and workable master plan.

# Residential Landscape Design Process

The following is a summary of our design process that we use for residential landscape projects. This process, we have found, ensures that the collaborative effort between the client and **Daniel J. O'Brien & Associates Limited Landscape Architects** is fully understood, and is an enjoyable, successful endeavour.

- Initial contact from prospective client
- **Daniel J. O'Brien & Associates** will contact prospective client to discuss landscape design requirements, and to gather client's ideas, sketches, photos, etc. In most cases a site meeting/visit is usually incorporated into this initial meeting to view and analyze proposed site.  
(Note: There is no charge for this initial meeting/site visit)
- After this initial meeting, **Daniel J. O'Brien & Associates** will prepare a detailed fee proposal outlining the action plan, services provided and the associates fee breakdown, disbursements, and taxes. The fee proposal is generally a lump sum fee but can be an hourly fee if desired. The fee breakdown lists all services provided and usually includes the following:

- (a) Site investigations, measurements, analysis, and photographs  
(ITEM 'A')

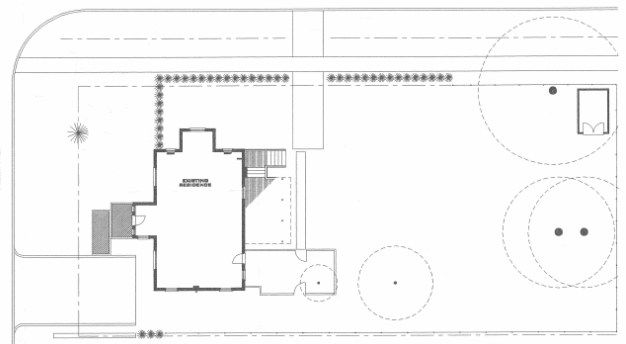


ITEM 'A'



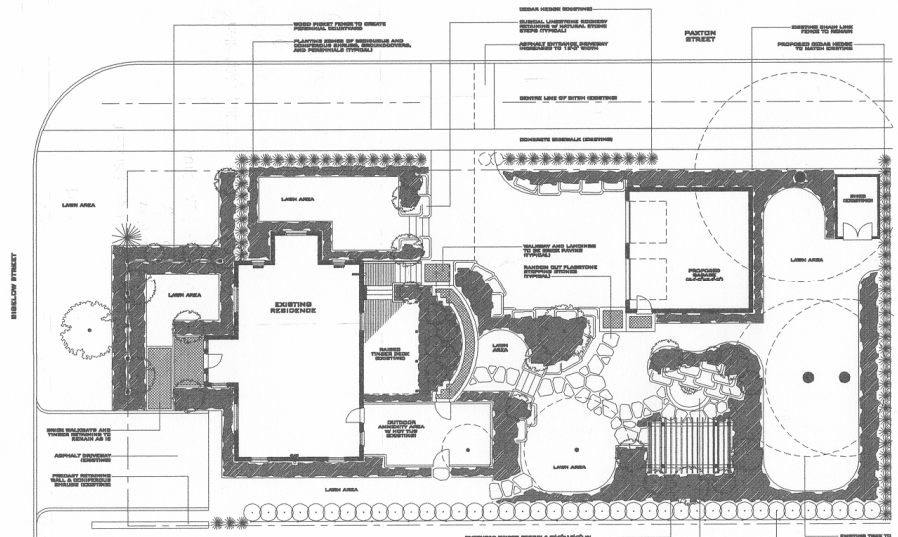
ITEM 'A'

- (b) Preparation of existing conditions base plan (CAD), incorporating site investigations, measurements, and legal survey if available  
(ITEM 'B')



ITEM 'B'

- (c) Preparation of landscape concept plans (CAD drawn presentation drawing)  
(ITEM 'C')

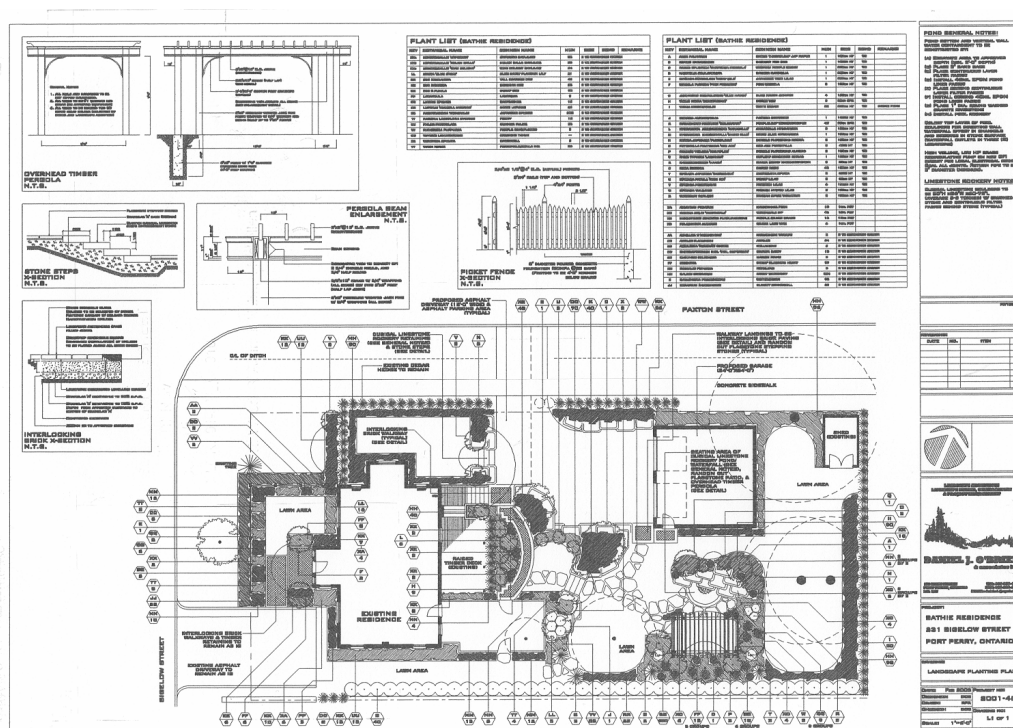


ITEM 'C'



# Residential Landscape Design Process

- (d) Meeting with client to review landscape concept drawings, product samples, plant species, and construction details
- (e) Preparation of landscape planting plan incorporating any client requests or Revisions into complete landscape working construction drawings, including all plant locations, species and sizes, and construction details



ITEM 'E'

- (f) Cost estimation of landscape plan to its entirety
  - (g) Meeting with client to review completed landscape working drawings, and discuss implementation plan and/or construction phasing
  - (h) Coordination of landscape contractors in obtaining prices for chosen landscape works and bid analysis/recommendation (if required additional fee)
  - (i) Supervision and coordination of landscape contractor in execution of proposed landscape plan (if required additional fee)
- After our landscape fee proposal is accepted and signed by client (and retainer is submitted if requested), the proposed action plan is initiated.

*Daniel J. O'Brien*

**Daniel J. O'Brien O.A.L.A., C.S.L.A.**  
**Principal Landscape Architect**

